



The Alani

4 bedrooms



The Alani 34 is the ultimate in modern living. Combining practicality with comfort, this home makes entertaining a breeze. From the heart of the home, the classic kitchen overlooks the family room, rumpus room and past the meals area into the alfresco area.

Features include a massive butlers pantry, a spacious master suite with a relaxing spa and double shower with tiled base.

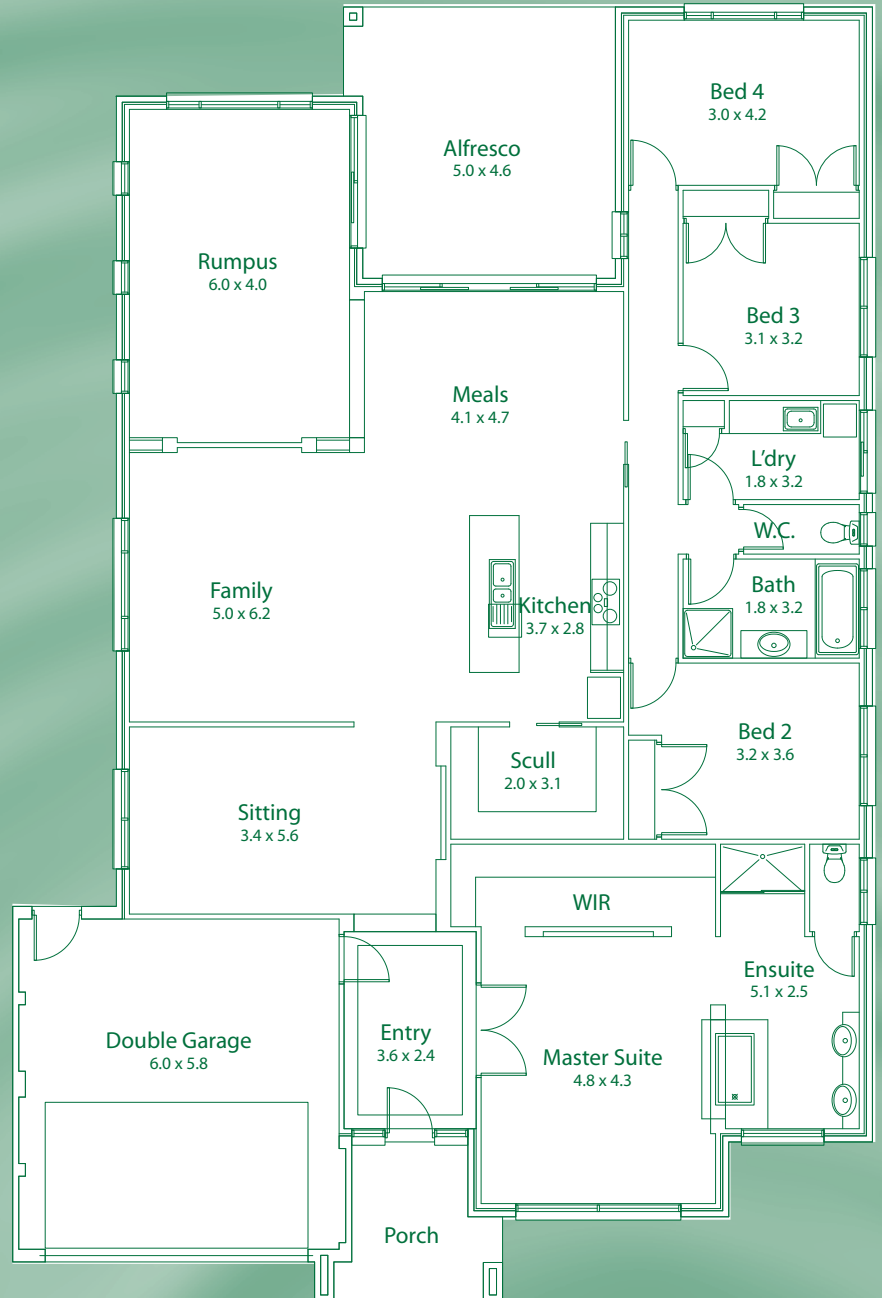
Complete integrated design makes the Alani 34 the top choice for the modern family.

Display Location

38 Webster Way,
Pakenham, Victoria 3804
Melways Ref: 317 C11
Telephone: 5940 4968
Facsimile: 5940 4970
Email: sales@pandjconstructions.com.au

Display Hours

Saturday - Wednesday
12.00 pm - 5.00pm



Width: 15.62m
Length: 23.51m

Plans can be altered to suit most block sizes and customer requirements

© P&J Constructions 2008. Reproduction in any form in whole or in part is forbidden.
All images are for illustrative purposes only. All information correct at time of printing. Subject to change